



BETWEEN THE LINES

Taproot Theatre Company's
Subscriber Newsletter
Volume 27, Issue 1

BOX OFFICE INFORMATION

Phone:
206.781.9707

Email:
box@taproottheatre.org

Box Office Hours:
Tuesday - Saturday,
Noon - 5 pm

*On performance days,
the box office phone
is answered until
30 minutes
prior to show time.*

**Tickets always
available online at
taproottheatre.org**

**Thank you to our 2019
Jewell Mainstage Season
Supporters!**



OFFICE OF ARTS & CULTURE
SEATTLE

Verity
Credit
Union

Nesholm Family
Foundation

Classic comedy *Arsenic and Old Lace* opens Taproot's 2019 Jewell Mainstage Season

Taproot Theatre Company's 2019 Jewell Mainstage Season: *Family Ties* opens with Joseph Kesselring's killer Broadway comedy *Arsenic and Old Lace* (Jan 23 – Mar 2, 2019). **Pam Nolte** (TTC Co-Founder, *Relativity*) and **Kim Morris** (Taproot Theatre's *Room Service*) co-star as the meddling matriarchs under the direction of **Marianne Savell** (Taproot Theatre's *Lady Windermere's Fan*) in her first solo directing gig on the Jewell Mainstage.

The Brewsters are an eccentric bunch: Mortimer's a theatre critic; his brother thinks he's Teddy Roosevelt and Aunts Abby and Martha are the most gracious killers. When Mortimer casually proposes to the pastor's daughter he unwittingly opens the lid on buried family secrets. As strangers and cops keep calling, the Brewsters will go to hilarious lengths to protect the skeletons in the cellar.

"*Arsenic* is the hilarious and smartly written comedy that takes protecting family to a comedic extreme. It's about community, friendship and unconditional love. People love this play and we've put together an incredible ensemble that sparkles with intelligence and comedic ability." Savell said.

Savell's extensive credits most recently include co-directing *Lady Windermere's Fan* at Taproot Theatre and directing *A Long Day's Journey into the Night*, *Yours Isabel*, *King Lear* and *Backstage West* at Actors Co-Op in Hollywood, CA. She also directed *The (Improvvised) Nutcracker*, *Twas the Night Before a Wonderful Christmas* and *Translations* at Taproot.

The cast also includes **Gretchen Duma** (Annex Theatre's *The Changeling*) as Rooney, **David Drummond** (Taproot Theatre's *The God Game*) as Jonathan, **Stephen Grenley** (Taproot Theatre's *Jeeves Intervenes*) as Teddy, **Bill Johns** (Taproot Theatre's *Room Service*) as Dr. Harper/Mr. Gibbs/Mr. Witherspoon, **Elizabeth Keck** (Taproot Theatre's *Baskerville: A Sherlock Holmes Mystery*) as Elaine Harper, **Tyler Todd Kimmel** (Taproot Theatre's *Sweet Land*) as O'Hara, **Kristen Natalia** (Taproot Theatre's *Crowns*) as Brophy, **Nolan Palmer** (Taproot's *The Trial of Ebenezer Scrooge*) as Dr. Einstein, **Kevin Pitman** (Taproot Theatre's *Camping with Henry and Tom*) as Klein and **Richard Nguyen Sloniker** (Taproot Theatre's *Lady Windermere's Fan*) as Mortimer.

Arsenic and Old Lace is followed by David Meyers' *We Will Not Be Silent*, a deadly game of cat and mouse between Sophie Scholl and a Nazi interrogator. Based on the true story, this drama plays March 20 – April 27, 2019.

PERFORMANCE INFORMATION

Previews: Jan 23 & 24 at 7:30pm | **Opening:** Jan 25 at 8:00pm
Running: Jan 23 - Mar 2 | **PWYC:** Jan 30 at 7:30pm

Show Times: Wed & Thur, 7:30 pm; Fri & Sat, 8:00 pm; Sat Matinee, 2:00 pm

Running Time: Approximately 2 hours
including one 15-minute intermission

Arsenic and Old Lace
is recommended for ages 12 and above.

Production Spotlight: From the Stage to the Director's Chair - Marianne Savell



Marianne Savell makes her Jewell Mainstage solodirectorial debut with ***Arsenic and Old Lace***.

Marianne Savell has been a part of Taproot's family for a long time. Subscribers most recently saw her as Mary Todd Lincoln in *A Civil War Christmas* in 2017. After co-directing *Lady Windermere's Fan* in 2018, she's taking charge of the comedy classic *Arsenic and Old Lace* in her long-awaited solo-directorial debut on the Jewell Mainstage. We asked her what it's like for her to move into the director's chair for this production.

How did you originally become involved with Taproot and what other productions have you been involved in?

Marianne Savell (MS): I auditioned for the Road Company in 1990 by video tape! But my first experience with Taproot as an actor was in *The Midnight Caller* by Horton Foote. Scott Nolte directed me and I was really a part of the Taproot family from then on. I've mainly been an actor for Taproot but I've also written and taught for the Acting Studio as well as directed for the Christmas touring program.

What's the transition like to move from actor to director in our space?

MS: I've been directing professionally for over 15 years, and have guest directed at many theatre companies. Directing for Taproot will be a fairly easy transition as I've observed the process many times and have excellent guidance from the leadership at Taproot.

***Arsenic and Old Lace* is a hugely popular show, what makes Taproot's production stand out?**

MS: First off, the space; a deep thrust with a balcony. Directing a comedy is all about the audience clearly seeing (and hearing) the story—and the funny. Making sure all three sides see each story beat and comedic moment is a fabulous challenge. Second, the acting; this cast is as vibrant and multifaceted as one could hope for. And thirdly, the design; we have a dream team of designers who are working harmoniously together to bring this beloved play to life.

What excites you about directing this show?

MS: The opportunity to present a cherished classic to Taproot's loyal and loving audience. The challenge of the space. The actors I get to work with. Participating with the passion of the design team. And the play; I have such respect for comedies of this era. They're sophisticated and witty and the acting style is quite special and fun.

Can you share any sources of inspiration that guided you in the production process?

MS: The strongest would be films of the 1930s and 40s. And Buster Keaton. His comedic brilliance continues to influence us all. I've only seen the film *Arsenic and Old Lace* once. After I got the gig, I wanted to see this beloved film that the audience adores simply to know what they hope for in the play. I'm a big Frank Capra and Cary Grant fan, so how I never saw this film is beyond me.

How are you going to make this show fit on the stage?

MS: Great question!!! I've been directing in the thrust stage configuration for quite awhile, and frankly, I love it. It's more work, or I should say *different* work than staging a play in a proscenium space. To get all the needed locations this play demands, we've made some big choices that I hope will pay off for the audience.

You've been part of the Taproot family for many years, what does that mean to you?

MS: Taproot is one of my artistic homes. I've been working at Taproot off and on since 1991. I was the original June Sanders in *Smoke on the Mountain*, and had the opportunity to perform in *The Amish Project* in the Isaac Studio, a play that has been very important in my artistic life.

Actor Spotlight: Where have I seen that actor before?

Family is important at Taproot Theatre. As subscribers, you're part of the family too! And you've enjoyed performances by actors who return to Taproot again and again too, because, for them, it feels like home.

Here are just a few of the familiar faces you'll see in *Arsenic and Old Lace*:



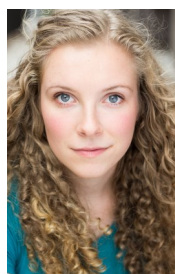
1. One of Taproot Theatre's co-founders, **Pam Nolte** has performed in innumerable Taproot shows, including in 2013's *The Matchmaker* as Dolly Levi.
2. You're probably still singing with joy after **Kristen Natalia's** powerful performance in *Crowns* last year.
3. No one left the theatre feeling blue after *The Explorers Club* in 2015, thanks in large part to **Bill Johns'** hilarious hijinx as the drink-slinging Luigi.
4. A veteran of dozens of Taproot productions, **Kim Morris** was most recently seen as everyone's favorite aunt in *Lady Windermere's Fan*.
5. Another actor with deep roots at Taproot Theatre is longtime favorite, **Nolan Palmer**, seen here in 1994's *The Voice of the Prairie*.
6. The ever reliable **Stephen Grenley** was Sherlock Holmes' trusty assistant Watson in both the 2010 and 2012 productions of *Sherlock Holmes and the Case of the Christmas Carol*.

Coming soon to the Jewell Mainstage: *We Will Not Be Silent* | Mar 20 - Apr 27

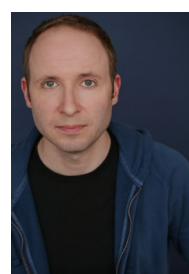


The true story of a young woman's resistance against the Nazis.

Twenty-one-year-old Sophie Scholl is a college student, anti-Nazi activist and, along with her brother, a member of The White Rose resistance. Charged with treason and held in a German prison, Sophie is forced to play a psychological game of cat and mouse as she fights for her life and soul with a Nazi interrogator. This emotionally charged story testifies to the courage required to live out your values.



Amy Helms
as
Sophie Scholl



Jonathan Stutzman
as
Kurt Grunwald



Ben Wippel
as
Hans Scholl

Playing on the Jewell Mainstage

Subscriber discount for additional tickets:
\$7 off per ticket.

For more information or to buy tickets

Visit | taproottheatre.org/we-will-not-be-silent

Call | 206.781.9707

Coming soon to the Isaac Studio: *Always... Patsy Cline* | Mar 14 - Apr 6



Patsy Cline had a singular way of telling a story.

Tune in as her songs and letters weave a big-hearted tale of love and loss told through her unlikely friendship with Texas housewife, Louise Seger. This musical tribute features Cayman Ilika and Kate Jaeger, two of Seattle's finest voices, recreating the sound that captured the love of a nation with hits like "Walkin' After Midnight," "I Fall to Pieces" and "Crazy."



Cayman Ilika
as
Patsy Cline



Kate Jaeger
as
Louise Seger

Playing in the Isaac Studio Theatre!

Subscriber Discount: \$7 off per ticket.

All seating in the Isaac Studio Theatre is General Admission. There are no reserved seats.

For more information or to buy tickets

Visit | taproottheatre.org/always-patsy-cline

Call | 206.781.9707

Elderberry Wine Making Recipe—1 Gallon Batch

Make your own safe-to-drink Elderberry Wine at home.

Recipe 1

Wash Berries. Remove stalks. Crush and place in primary fermenter. Dissolve campden tablets in 2 cups hot water. Add to primary fermenter. Stir in lemon juice and pectic enzyme. Leave overnight.

Add 10 cups water and yeast. Let sit 3 days, stirring daily. Make sure fruit stays submerged.

On day 4, strain out the fruit. Add sugar and nutrients. Put into secondary fermenter and attach airlock. Finish as for dry wine or sweet wine below.

Recipe 2

Chop raisins. Put into primary fermenter with 10 cups cold water. Dissolve campden tablets in 2 cups hot water. Add to primary fermenter. Let sit overnight.

On day 2, add yeast. Stir vigorously each day for 2 weeks.

On day 15, Wash elderberries and remove stems. Put berries into an oven-proof container (not metal). Put it in oven at 250°F for 15 minutes, or until juice runs. Strain the juice from the skins. Strain the raisins from the wine. Add the cooled elderberry juice (should be at least 2 1/4 cups juice). Add pectic enzyme. Stir. Siphon into secondary fermenter and attach airlock. Finish as for dry wine or sweet wine below.

Finishing

For a dry wine, Rack in three weeks and return to secondary fermenter. Rack again in three months, and every three months until 1 year old. Bottle.

For a sweet wine, rack at three weeks. Add 1/2 cup sugar dissolved in 1 cup wine. Stir gently, and place back into secondary fermenter. Repeat process every six weeks until fermentation does not restart with the addition of sugar. Rack every three months until one year old. Bottle.

Note

Recipe 1 is ready to drink in about 3 months, and only continues to improve for about 2 years.

Recipe 2 is best if you can refrain from drinking it for a year from the date it was started.

winemakersdepot.com/Elderberry-Wine-Recipe-W76.aspx



Red Stemmed Elderberries or Sambucus
wikipedia.org/wiki/Sambucus

Elderberry Wine Ingredients:

Recipe 1

- 4 1/2 cups Elderberries
- 12 cups water
- 5 3/4 cups sugar
- 1 lemon, juice only
- 3 campden tablets
- 1 teaspoon pectic enzyme
- 1 teaspoon yeast nutrients
- 1 package wine yeast

Recipe 2

- 4 1/2 cups Elderberries
- 12 cups water
- 10 cups raisins
- 3 campden tablets
- 1 teaspoon pectic enzyme
- 1 teaspoon yeast nutrients
- 1 package wine yeast

Note: there is no sugar added to Recipe 2.

***Taproot Theatre Company
does not recommend
adding any
STRONGER ingredients!***

2019 Subscriber Rewards Discounts



American Dance Institute — NEW THIS YEAR!

8001 Greenwood Ave N, Seattle, WA 98103 | americandanceinstitute.com

Discount: \$40 registration fee will be waived when you show your Subscriber Rewards Card at any of our three locations in Greenwood, Magnolia and Shoreline.

Dance classes taught with an emphasis on technique, sensitivity and respect.

Additional locations: Magnolia – 3116 W Smith St & Shoreline – 1240 NE 175th St



The Cookie Counter

7415 Greenwood Ave N, Seattle, WA 98103 | seattlecookiecounter.com

Discount: 2 for 1 cookie when using your Subscriber Rewards Card.

We are a small batch bakery and ice creamery offering traditional and nostalgic flavors, with something for everyone! We have a full espresso bar, featuring Cafe Mam Espresso and Taglewood Chai. Open until 10pm, Wednesday – Saturday.



Flying Bike Cooperative Brewery

8570 Greenwood Ave N, Seattle, WA 98103 | flyingbike.coop

Discount: \$1 off your first beer when you show your rewards card and a ticket stub from a recent show at Taproot Theatre.

Flying Bike is Washington's first co-op brewery! We strive to ensure our tasting room and delicious brews are accessible to all. We're also a Cooperative which means we are owned by our members (100%!). Co-op member also gets you some great deals, and once you're a member it lasts for life — come be a part of this great community!



Greenwood Vision

133 N 85th St, Seattle, WA 98103 | greenwoodoptical.com

Discount: 10% off on glasses or contacts when you mention code TPG019.

An optical office providing exams, contact lenses and eyewear.



Hounds Tooth Public House

8551 Greenwood Ave N, Seattle, WA 98103 | houndstoothpublic.com

Discount: 10% all purchases when using your Subscriber Rewards Card.

Consider Hounds Tooth Public House the next time you want to really feel at home at a Greenwood venue! A sports/pinball bar with a rock and roll edge. Great food, awesome staff, cool music and good times are a guarantee. Weekly pinball tournament Wednesday, Thursday Trivia and sports all day, every day.



Ladywell's Vitality Spa & Sauna

8538 1st Ave NW, Seattle, WA 98177 | ladywellspa.com

Discount: 10% off entry when you present your Subscriber Rewards Card.

We are a woman's hydrotherapy facility. We have three different heated tubs, (a hot tub, tepid tub, and a cold plunge) and three different heated saunas, (A steam room, Cedar Sauna, and a Pink Himalayan infrared salt room).

2019 Subscriber Rewards Discounts



Luna Azul Latin Cuisine — NEW THIS YEAR!

8552 1/2 Greenwood Ave N, Seattle, WA 98103 | lunaazulseattle.com

Discount: 10% off when you use your Subscriber Rewards Card.

Cheery, no-frills taqueria dishes out tacos, salsas, enchiladas and other basic Mexican eats.



Luso Food and Wine

8218 Greenwood Ave N, Seattle, WA 98103 | lusoseattle.com

Discount: Special pricing when you show your Subscriber Rewards Card.

(Wine Tasting: \$10 Wed – Sat, 3 PM - 6 PM; 2 white, 2 red and 2 fortified wines. Lunch: Two menu items for \$10, Fri - Sat 11 AM - 3 PM. Dinner: One item on the menu for \$12, Wed – Thurs 6 PM - 9 PM.)

A small corner of Portugal in the heart of Greenwood! Welcoming everyone to experience some tranquil time over a glass of wine and some delicious food.



Modern Japanese Cuisine

6108 Phinney Ave N, Seattle, WA 98103 | modern-seattle.com

Discount: 10% off both lunch and dinner when you present your Subscriber Rewards Card. (No discount on happy hour items.)

We are a Japanese cuisine and desserts restaurant. We serve Japanese comfort food, sushi, curry, noodle, desserts, sake and beer.



The Olive and Grape

8516 Greenwood Ave N, Seattle, WA 98103 | theoliveandgrape.com

Discount: 10% discount off your bill when you present your Subscriber Rewards Card.

Traditional Italian and Turkish Grill.



Seatown Veterinary Care

8542 1st Ave NW, Seattle, WA 98117 | seatownvet.com

Discount: Show your Subscriber Rewards Card and receive 10% off on all professional services. (Does not include lab work or prescriptions/OTC products).

We are a state of the art, full service veterinary clinic located in the heart of Greenwood. We offer exams, surgical and dental services, as well as a full suite of in house and send out diagnostic capabilities. On site specialist consults also available on a limited basis.



Truffle Queen — NEW THIS YEAR!

1524 Pike Place Seattle, WA 98101 | trufflequeen.com

Discount: \$8 Wine Tasting and \$5 Pours. (Normally \$10 each.)

Gourmet specialty foods and wine located in the Pike Place Market.